

# ATOM FL LED



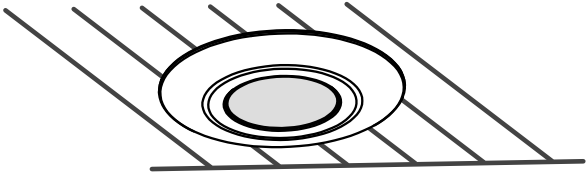
## INSTALLATION AND MAINTENANCE MANUAL **EN**

### MOUNTING TYPE

Directly to the modular or suspended ceiling.  
For other mounting types, see MOUNTING KITS in luminaire datasheet

### SYSTEM VARIANT

- CB** - luminaire supplied from HVCBS (230V AC/216V DC), without address module
- CBAM** - luminaire supplied from the HVCBS (230V AC/216V DC), with built-in address module and operating mode selection
- LV** - luminaire supplied with 24V DC
- LVAM** - luminaire supplied with 24V DC from the LVDBS system, with built-in address module and operating mode selection



### TECHNICAL DATA

Supply voltage	<b>CB</b>	230V AC 50/60Hz 80-275V DC
	<b>CBAM</b>	230V AC 50/60Hz 170-275V DC
	<b>LV/LVAM</b>	10-32V DC
Power consumption		< 5VA
Protection class	<b>CB/CBAM</b>	I
	<b>LV/LVAM</b>	III
Ingress protection		IP20 / IP65

Light source type	LED module <sup>1)</sup>	
Light source temperature	5700K	
Light source supply power	2W	
Light source lifespan	> 50 000h	
Ambient temperature range	<b>CB/CBAM</b>	-10 - +45°C TE: <sup>2)</sup> -25 - +50°C
	<b>LV/LVAM</b>	-25 - +55°C
Supply cable cross-section area	0,5 - 1,5mm <sup>2</sup>	

<sup>1)</sup> Non-exchangeable but serviceable light source; <sup>2)</sup> TE - extended temperature range

### SAFETY

- During the installation and usage of emergency luminaires, follow the national safety rules as well as generally accepted technical rules.
- Supply voltage should never be removed from the permanent phase by any external switches, relays or contactors (BMS, wall switch, etc.).
- During usage of emergency luminaires keep a register of inspection reports. Luminaire installation or maintenance has to be preceded by turning off the power supply and battery.
- Ensure that all foreign bodies are removed before the luminaire power is switched on.
- The luminaire is to be used undamaged and in accordance with specifications.
- The luminaire is designed for use inside the building.

The above-mentioned luminaire is a fire protection equipment and therefore falls within relevant standards and regulations.



**NOT OBEYING THE SAFETY INSTRUCTIONS AND RECOMMENDATIONS CAN CAUSE LIFE THREAT OR EVEN DEATH**

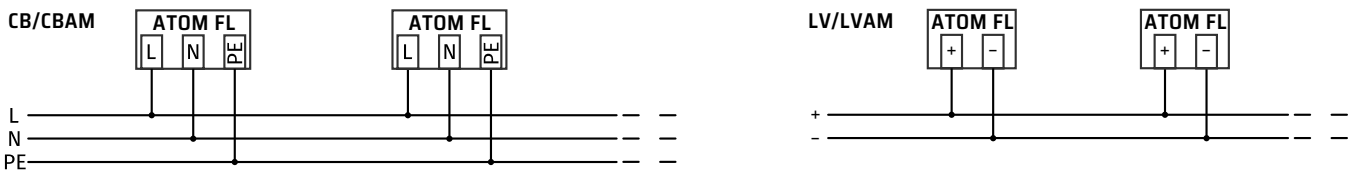
Not obeying this instruction manual can result in luminaire damage and loss of warranty



**DO NOT STARE AT THE OPERATING LIGHT SOURCE**

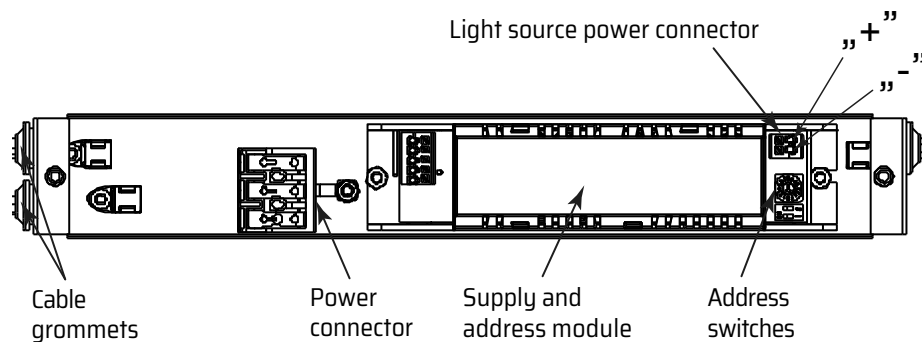
The luminaire should be positioned so that prolonged staring into the luminaire at a distance closed than 0.5m is not expected

### WIRING DIAGRAM

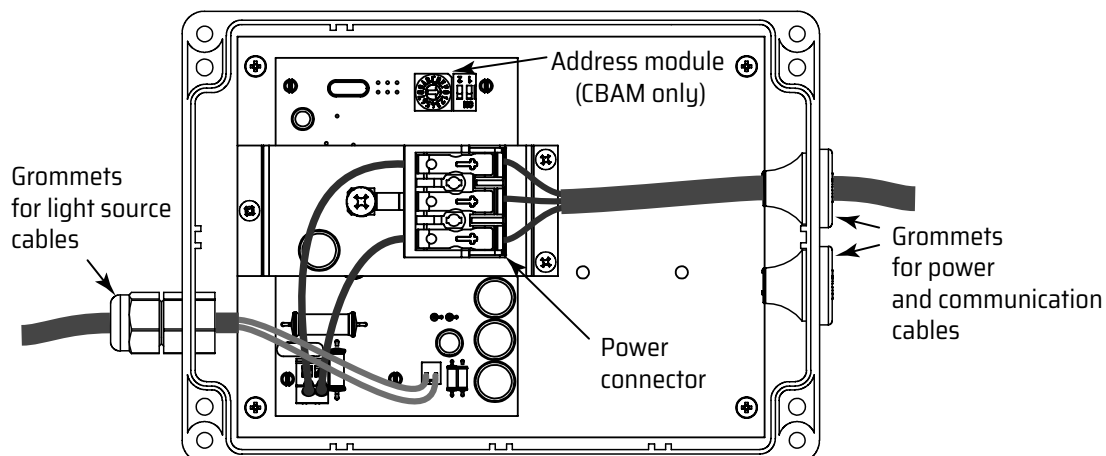


## EMERGENCY MODULE CONSTRUCTION

### IP20 module

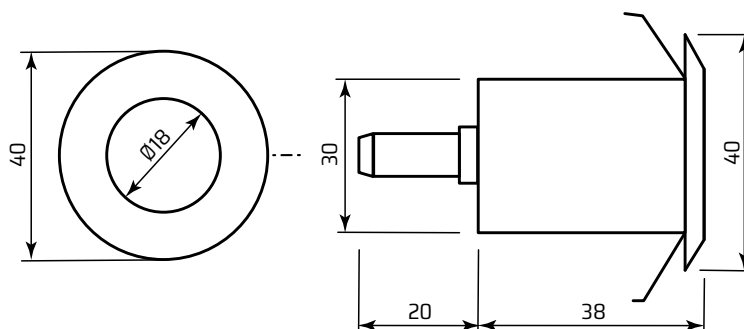


### IP65 module

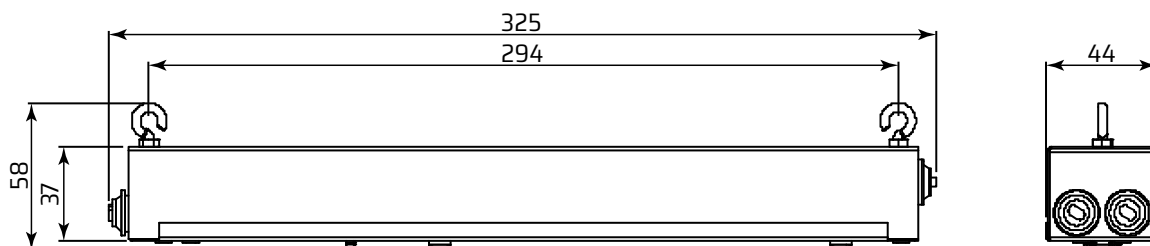


## DIMENSIONS (mm)

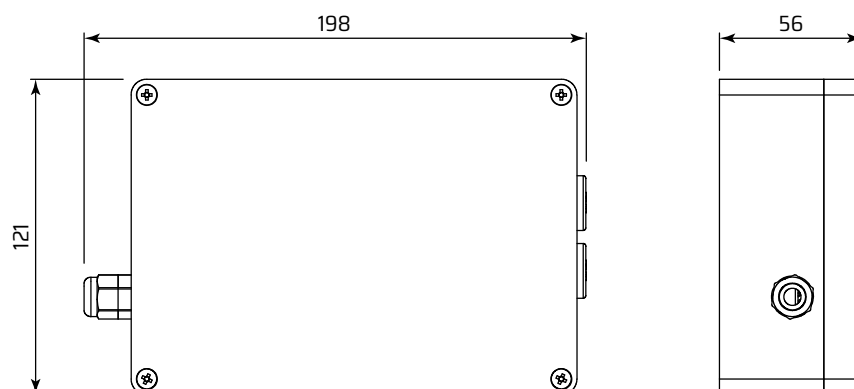
### Light source



### IP20 module



### IP65 module



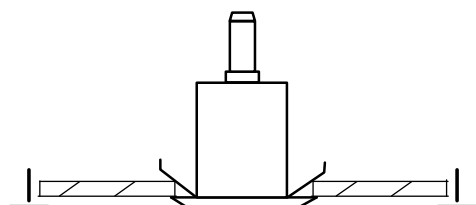
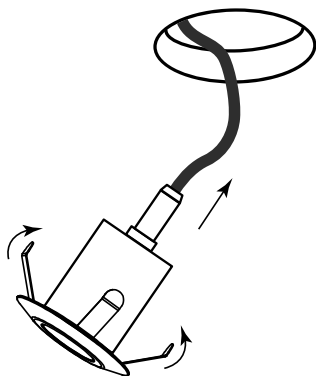


**BEFORE ANY INSTALLATION OR MAINTENANCE OPERATION IS PERFORMED ON THE LUMINAIRE THE POWER SUPPLY SHOULD BE DISCONNECTED.**

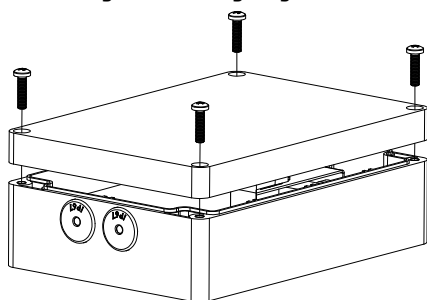
All installation and maintenance procedures can be performed only by qualified, properly trained and if appropriate, certified staff.

## INSTALLATION

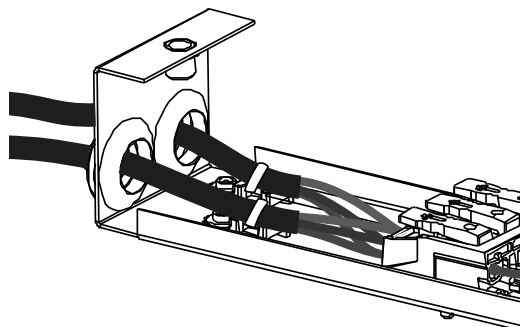
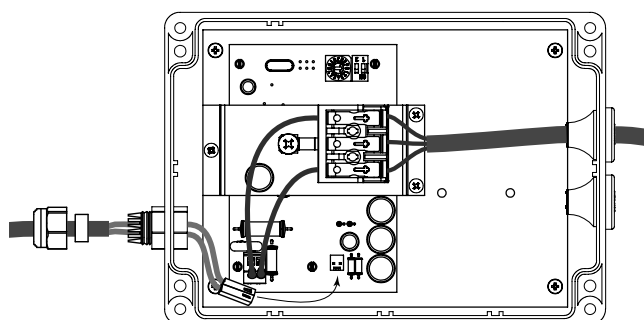
1. Unpack the luminaire after transport and verify its condition.
2. Cut a hole with the Ø35-36mm diameter in the modular ceiling for the light source (see DIMENSIONS).
3. Bend the springs fixing the luminaire upwards and slide the luminaire with cable into previously prepared mounting hole in the ceiling.



4. Provide free access to the ceiling space. Place the emergency module on the modular ceiling.
5. Open the housing of the emergency module.

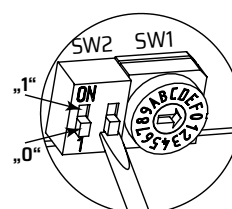
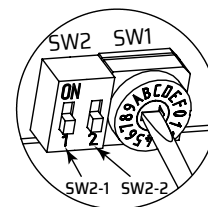


6. Insert the power cables and the light source cables through the grommets into the housing and connect them (see WIRING DIAGRAM).

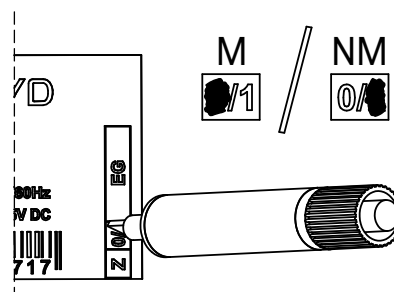


7. In case of luminaires with built-in address module:
  - a. set luminaire address using the rotary switch SW1 and second slider of SW2 switch (SW2-2).  
Setting the SW2-2 position to „1” means adding 10 to the address, according to the table below.

SW2-2	SW1	Address	SW2-2	SW1	Address
0	1	1	1	1	11
0	2	2	1	2	12
0	3	3	1	3	13
0	4	4	1	4	14
0	5	5	1	5	15
0	6	6	1	6	16
0	7	7	1	7	17
0	8	8	1	8	18
0	9	9	1	9	19
0	A	10	1	A	20



- b. using the first slider of SW2 switch (SW2-1) select the operating mode. Position „1” – maintained (M), position „0” – non-maintained (NM).
8. Mark the operating mode on the luminaire label. Mark **0** for maintained mode (M) and **1** for non-maintained mode (NM).



9. Close the housing of the emergency module (opposite to step 5).
10. Close the inter-ceiling space.
11. Perform the commissioning procedure.

## COMMISSIONING

After all installation procedures are finished, luminaire operation needs to be verified.  
Follow the instructions below:

1. Switch the luminaire power supply on the HVCBS system.
2. For luminaires without built-in address module (CB, LV):
  - a. Leave luminaire operating and verify light source operation – should be operating.
  - b. Turn off luminaire power supply.
3. For luminaires with built-in address module (CBAM, LVAM):
  - a. Configure the HVCBS/LVDBS system.
  - b. Configure HVCBS/LVDBS circuit as maintained.
  - c. If required, switch between maintained and non-maintained luminaire operating mode.
  - d. Run the functional test on HVCBS/LVDBS system.
  - e. Verify luminaire operation. The light source should operate properly.
  - f. Verify if the HVCBS/LVDBS system reports proper luminaire operation.

## MAINTENANCE

Luminaire should be cleaned with a damp cloth according to building maintenance plan.  
Do not use abrasive cleaners, solvents, substances and cleaning agents containing alcohol to clean the light source.  
The light source used in this luminaire may only be replaced by the manufacturer, his service agent or a similar qualified person.

## POTENTIAL IRREGULARITIES AND TROUBLESHOOTING

PROBLEM	POSSIBLE CAUSE	SOLUTION
After turning on the power the light source is off	Not connected or badly connected power cords.	Make sure the power cables are properly connected to the power connector inside the luminaire.
	No power supply in the cables connected to the luminaire.	Using a voltage detector, check the cables connected to the luminaire has appropriate supply voltage.

## STORAGE

The luminaire should be stored no longer than 6 months from the date of purchase, in a dry place with an ambient temperature range of -10 – +30°C.

## WARRANTY

Warranty is valid and enforceable only when manufacturer's recommendations are preserved, and the installation and usage are proper.  
Warranty is granted for a period of 12 months from the date of sale, unless the luminaire has been sold under different contract conditions.  
The warranty is excluded in case of misuse, unsuitable use, wrong connection or mechanical defects of the luminaire caused by the client.